

Simply complete and mail this postage-paid reply card, or email us at sales@spintek.com.

Yes, please contact me. I want a miracle on my bench!

Name: _____

Address: _____

City: _____ State: _____ Zip Code: _____

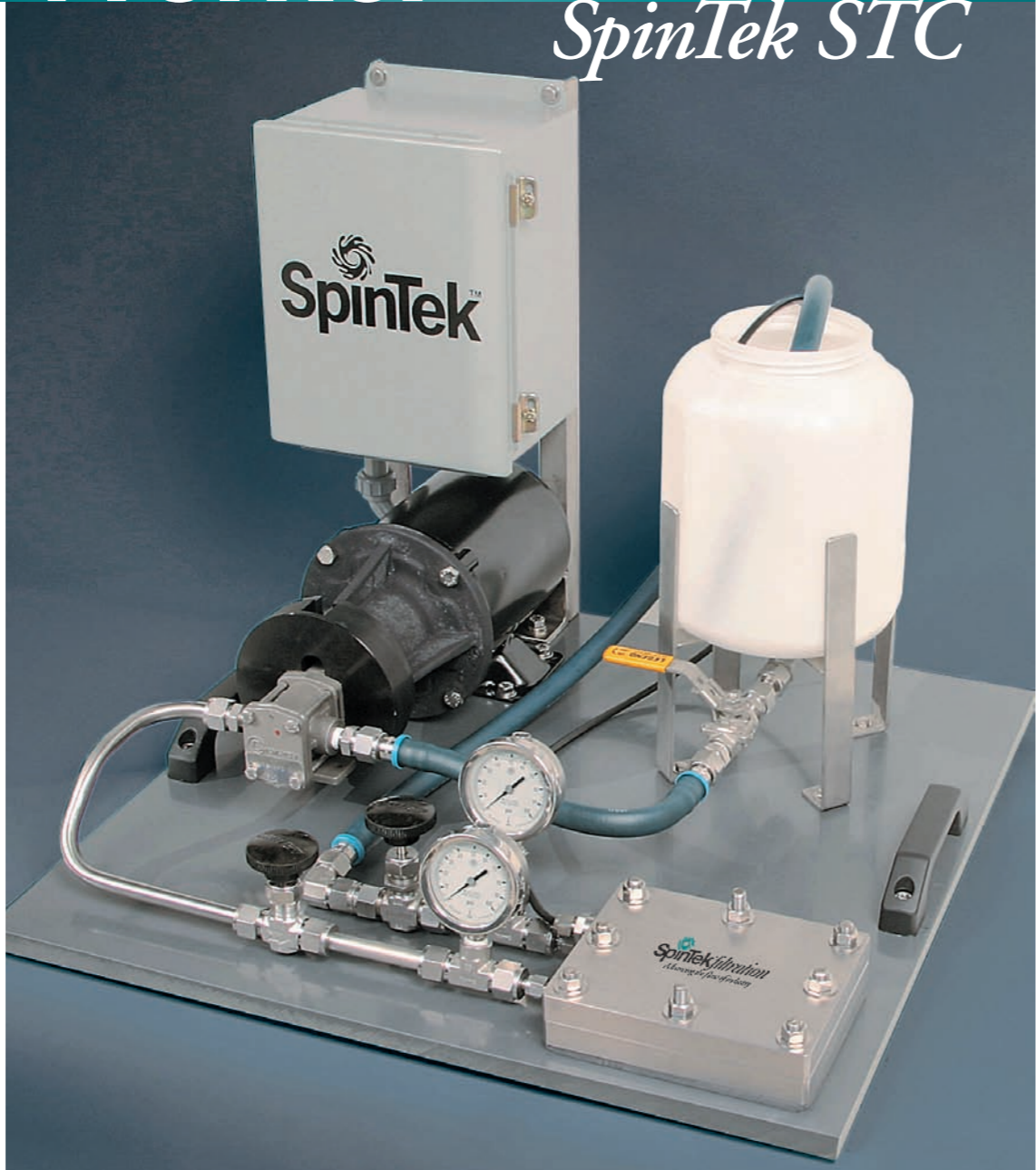
Phone: _____

Email: _____

Best time to call: _____ am pm


Find out more

Put the shear genius of SpinTek Filtration Technology to the test. SpinTek's proven industry leadership will help you streamline system design, lower costs and maximize floor and bench space.



Worker

SpinTek STC

 **SpinTek filtration**
Advancing the flow of industry

SpinTek filtration
10863 Portal Drive
Los Alamitos, CA 90720 USA
www.spintek.com

FIRST CLASS
US POSTAGE
PAID
PERMIT NO 4
LOS ALAMITOS CA

**A compact, scalable filtration test bed –
How clever is that?**

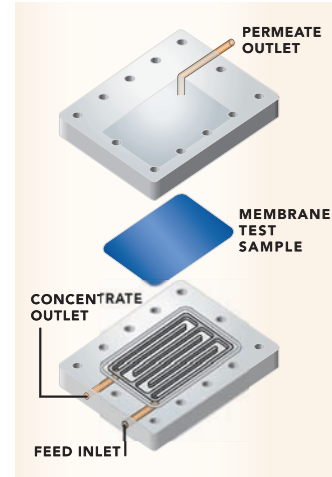


GENIUS

SHEAR

Desktop Miracle

Save time, money and bench space.



EASY CHANGE MEMBRANE:
Easy-remove membrane facilitates quick cleaning and membrane inspection.

STANDARD FEATURES

- Includes membrane filtration system instrumentation, feed pump and one flat sheet membrane test sample
- Single unit flow rates up to 20 gpd (76 lpd)*
- Automatic operation
- Easy-change membrane
- Ultra-small footprint 24" x 24" x 24" (610mm x 610mm x 610mm)

*DI water, 50 psig, 75°F, 0.2 micron membrane

Big benefits. Small footprint.

The SpinTek Static Test Cell (STC) is a high-shear, high-capacity filtration system that provides valuable time and cost advantages in testing feed streams and membrane filtration viability using small volumes of feed solution. The ultra-small footprint maximizes any lab or bench top space.

High-shear. Low cost.

High shear performance delivers increased flow rates and faster test times while resisting fouling and associated downtime. The low-cost system adds even more value to your process by facilitating real-time monitoring and testing of problematic streams.

Increase productivity. Save time.

The STC system's efficiency and versatility in testing a wide range of membranes and hard-to-treat streams brings a new level of operational performance, accuracy and measurable timesavings to your workflow.

Handle Extreme Conditions

SpinTek's ceramic membranes offer exceptional performance for high temperature, high pH and caustic feed streams. The STC system breezes through highly concentrated streams.

The smart choice for filtration design.

The results from the STC can be used to more rapidly

design larger field demonstration systems or full-scale filtration products. In addition, the data developed from the STC system provides a low cost, simple method of screening feed solutions as candidates for membrane filtration.



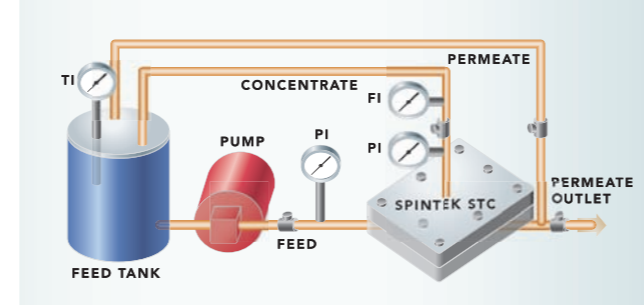
SMALL, VERSATILE AND POWERFUL.
The ability to test so many types of membranes expands your design options.

Decrease test costs.

The affordability of the free-standing STC system, along with process improvements from higher flow rates, lower maintenance, real-time testing and monitoring and minimized fouling help lower test costs and maximize return on investment.

Scale up with a single supplier.

SpinTek gives you a single-vendor growth path. You don't have to change vendors to scale up your design to application specifications.

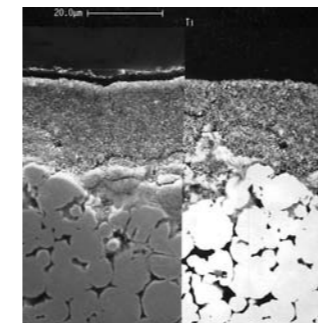


PROCESS FLOW

A variable speed pump and backpressure control maintain constant pressure on the membrane.

Increase test versatility.

The flexibility of SpinTek's highly adaptable bench top system accepts a wide variety of polymeric or ceramic membranes. Any flat sheet membrane can be cut to size and tested in the STC system. The technology allows assessment of waste or process streams previously considered untreatable.



CERAMIC MEMBRANE

SpinTek's leadership in ceramic membrane R&D is your filtration advantage.

Speedy

The ultimate in high-shear filtration.

Need even more capability?

SpinTek Speedy™ is the next generation of MF technology. Speedy's high-velocity rotating ceramic membrane creates shear that is significantly higher than traditional MF systems. SpinTek's exclusive Lab units let you evaluate both the long-term benefits of the SpinTek process against real industrial fluids, and the economics of SpinTek technology in actual industrial situations.



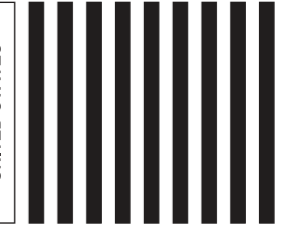
Foul-resistant, high-shear filtration

Speedy combines powerful, high-shear capability with centrifugal forces acting on the boundary layer to greatly reduce membrane fouling and increase fluid flow through the membrane. The process allows for concentrates with a higher percentage of total solids than traditional MF systems.

Decrease downtime. Reduce maintenance

If you want to scale up your capability while scaling down costly maintenance and downtime, find out more about how Speedy can deliver tremendous process benefits to your filtration system development.

NO POSTAGE
NECESSARY
IF MAILED
IN THE
UNITED STATES



BUSINESS REPLY MAIL
FIRST-CLASS MAIL PERMIT NO. 46 LOS ALAMITOS CA

POSTAGE WILL BE PAID BY ADDRESSEE

**SPINTEK FILTRATION
10863 PORTAL DR
LOS ALAMITOS CA 90720-9814**

